



This power unit has a double acting circuit with SAE#6 (9/16-18) A & B ports. The 2 position/2 way cartridge has an internal piloted check valve to prevent internal bypass and maintain constant pressure. This circuit design also utilize a cartridge check and adjustable relief valve on the main and B port. The magnetic two button remote control comes with holder and 6 meter of cable, which has a quick connection at the motor. The gear pump is equipped with a suction screen attach to a 90° elbow inside the tank which comes with a 3/4" NPT breather/dipstick.

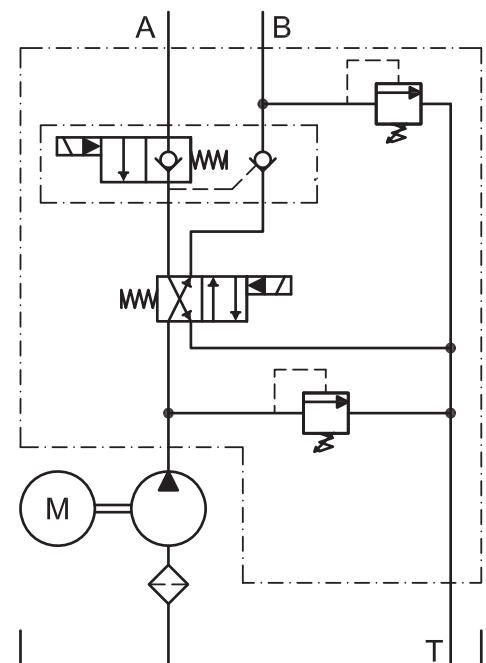
### OPTIONS:

- ▶ **Motor:** DC 12 & 24v, or AC 115/230V, single phase or AC 230/460/575V three phase
- ▶ **Tank:** From 1.7 liters to 23.5 liters. Plastic or Steel
- ▶ **Pump:** 0.8, 1.0, 1.3, 1.6, 2.1, 2.5, 3.2, 4.2, 5.8 and 8.0cc
- ▶ 10' remote control cable extension
- ▶ **Mounting:** Vertical or Horizontal

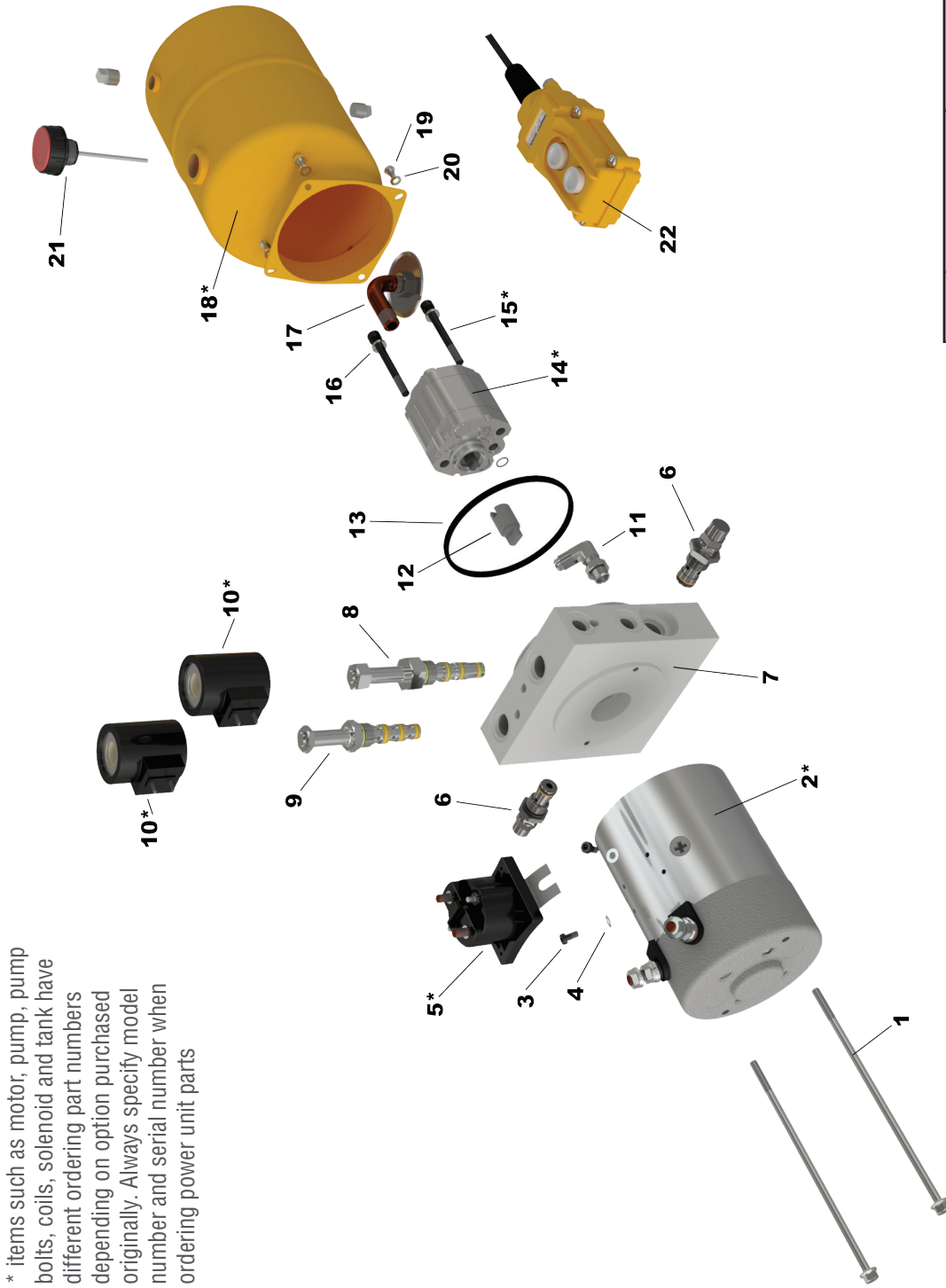


### TYPICAL APPLICATION:

- ▶ Power Up / Power Down System
- ▶ Tailgate (with pressure comp. flow control)
- ▶ Dump Trailer
- ▶ Compactor
- ▶ Presses
- ▶ Lift Equipment



# EXPLODED VIEW



\* items such as motor, pump, pump bolts, coils, solenoid and tank have different ordering part numbers depending on option purchased originally. Always specify model number and serial number when ordering power unit parts

ITEM	PART NUMBER	DESCRIPTION	QTY
11	310020	Block Elbow 90°	1
12	421000	Pump/Motor Coupler	1
13	330100	Tank O-Ring	1
14	400xxx*	Pump*	1
15	301xxx*	Pump Bolt*	2
16	307080	Lockwasher (Pump Bolt)	2
17	150012	Screen Filter Suction Elbow	1
18	500xxx*	Tank*	1
19	300030	Tank Bolt	4
20	307050	Lockwasher (Tank Bolt)	4
21	520030	Breather	1
22	630060	Remote Control	1

ITEM	PART NUMBER	DESCRIPTION	QTY
1	300060	Motor Bolts	2
2	600xxx*	Motor*	1
3	300010	Solenoid Bolt	2
4	307000	Solenoid Washer	2
5	640xxx*	Solenoid*	1
6	111000	Relief Valve	2
7	210090	Block	1
8	115310	2 Way / 2 Position Valve	1
9	115300	4 Way / 2 Position Valve	1
10	641xxx*	Coil	2

# MODEL 10

All product specifications are subject to change without prior notice.

WWW.EAGLE-HYDRAULIC.COM